

- Overview
- Frequently Asked Questions
- Sample Course Materials
- Continuing Education
- Audiology Clinic
- Departments +

Audiologist's Assistant Program

The audiologist's assistant program prepares students to assist licensed audiologists. Enrollment is open to all students sponsored by a licensed audiologist who will oversee the clinical training of the assistant.

The audiologist's assistant works under the supervision of an audiologist, to help the audiologist work more productively. Our program at NSU prepares the student to work under the supervision of a licensed audiologist, performing selected tasks in patient assessment and working with hearing aids and other amplification systems.

The Audiologist's Assistants program at NSU is 100% distance learning. Students access a Web site that contains all of their course related resources. For more information see links below or email audassist@nova.edu.

- [Frequently Asked Questions](#)
- [Sample Course Material](#)

HOW TO ENROLL

There are two steps to the registration process.

Step 1:
Complete the following [registration form](#) using the directions provided on the form.

Step 2:
Click on the link(s) below to register for your desired courses. If you would like to register for both courses, simply follow the same procedure for the other course. Click [here](#) for specific instructions. You may register at any time.

- [Amplification Course Registration](#)
- [Diagnostics Course Registration](#)

1) Click on the course you wish to complete. If you are planning to register for both courses, click on either one of the options at this time. By clicking this link, you will begin the registration process.

OPEN

Registration

Below is the class you have selected. To continue your registration select Add then click View and Continue registration. If you wish to add additional classes to your schedule, click the magnifying glass in the search bar above. Once you have added the additional courses, click the View and Continue button. Once you have added your class(es), click the Register button.

Search Results (Found 0 classes.)

Sort... Compact view

2) After clicking on either the Amplification or Diagnostics link, you will be brought to this page. Before getting to this page, you may be prompted by a “Click on here to use Flash” button in the middle of the screen. Click this button in order to continue to this page shown in the photo.

View and Continue Registration

3) Type "Audiologist Assistant" into the search bar.

Registration

Below is the class you have selected. To continue your registration select Add then click View and Continue registration. If you wish to add additional classes to your schedule, click the magnifying glass in the search bar above. Once you have added the additional courses, click the View and Continue button. Once you have added your class(es), click the Register button.

Search Results (Found 2 classes.)

				Sort...	Compact view
AUDC 0001 0 - Audiologist Assistant Amplification Module					
CRN: 122	Term: 2017-18 ContinuingEd/Prof Dev	Campus: Programs On-line	Fees: \$345.00		
Instructor: Andrews, Julia	Type: Distance Educ: Internet	Seats: 123			Details Add
Registration dates: Jul 01, 2017 - Jun 30, 2018					
Start dates: Jul 01, 2017 - Jun 30, 2018					
AUDC 0002 0 - Audiologist Assistant Diagnostic Module					
CRN: 123	Term: 2017-18 ContinuingEd/Prof Dev	Campus: Programs On-line	Fees: \$345.00		
Instructor: Andrews, Julia	Type: Distance Educ: Internet	Seats: 133			Details Add
Registration dates: Jul 01, 2017 - Jun 30, 2018					
Start dates: Jul 01, 2017 - Jun 30, 2018					

4) The Amplification and Diagnostics courses will then appear on this list.

5) Click on "Add" in order to add the desired course(s) to your "Schedule Builder".

View and Continue Registration

6) Once you have added the desired course(s) to your schedule builder, you will receive a pop-up notification that it has been successfully added.

The screenshot shows the NSU registration system interface. At the top, there is a navigation bar with 'Home', 'Schedule Builder', 'Manage Registration', and 'My Profile'. A search bar contains the text 'audiologist assistant'. A notification box at the top right states: 'Audiologist Assistant Diagnostic Module has been successfully added to the schedule builder.' Below the search bar, the 'Registration' section provides instructions on how to proceed. The 'Search Results' section displays two courses:

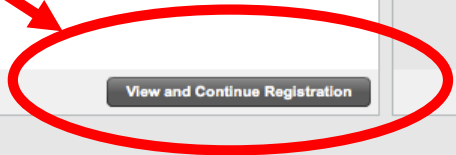
Search Results (Found 2 classes.)			
Sort...			
Compact view			
AUDC 0001 0 - Audiologist Assistant Amplification Module			
CRN: 122	Term: 2017-18 ContinuingEd/Prof Dev	Campus: Programs On-line	Fees: \$345.00
Instructor: Andrews, Julia	Type: Distance Educ: Internet	Seats: 123	Details
Registration dates: Jul 01, 2017 - Jun 30, 2018			Add
Start dates: Jul 01, 2017 - Jun 30, 2018			
AUDC 0002 0 - Audiologist Assistant Diagnostic Module			
CRN: 123	Term: 2017-18 ContinuingEd/Prof Dev	Campus: Programs On-line	Fees: \$345.00
Instructor: Andrews, Julia	Type: Distance Educ: Internet	Seats: 133	Details
Registration dates: Jul 01, 2017 - Jun 30, 2018			Add
Start dates: Jul 01, 2017 - Jun 30, 2018			

Registration

Below is the class you have selected. To continue your registration select Add then click View and Continue registration. If you wish to add additional classes to your schedule, click the magnifying glass in the search bar above. Once you have added the additional courses, click the View and Continue button. Once you have added your class(es), click the Register button.

Search Results (Found 2 classes.)				Sort...	Compact view
AUDC 0001 0 - Audiologist Assistant Amplification Module					
CRN: 122	Term: 2017-18 ContinuingEd/Prof Dev	Campus: Programs On-line	Fees: \$345.00	Details	Add
Instructor: Andrews, Julia	Type: Distance Educ: Internet	Seats: 123			
Registration dates: Jul 01, 2017 - Jun 30, 2018					
Start dates: Jul 01, 2017 - Jun 30, 2018					
AUDC 0002 0 - Audiologist Assistant Diagnostic Module					
CRN: 123	Term: 2017-18 ContinuingEd/Prof Dev	Campus: Programs On-line	Fees: \$345.00	Details	Add
Instructor: Andrews, Julia	Type: Distance Educ: Internet	Seats: 133			
Registration dates: Jul 01, 2017 - Jun 30, 2018					
Start dates: Jul 01, 2017 - Jun 30, 2018					

7) Click on the "View and Continue Registration" button.



8) The desired course(s) that you have chosen will appear here in your "Schedule". (If there is a course listed that you do not wish to take, click "Remove" at this time.)

Registration

Below is the class you have selected. To continue your registration select Add then click View and Continue registration. If you wish to add additional classes to your schedule, click the magnifying glass in the search bar above. Once you have added the additional courses, click the View and Continue button. Once you have added your class(es), click the Register button.

Search Results (Found 2 classes.)

Sort... [Detailed View](#)

AUDC 0001 0 - Audiologist Assistant Amplification
Programs On-line Seats: 123
07/01/17 - 06/30/18
Fees: \$345.00 [Details](#) [Add](#)

AUDC 0002 0 - Audiologist Assistant Diagnostic N
Programs On-line Seats: 133
07/01/17 - 06/30/18
Fees: \$345.00 [Details](#) [Add](#)

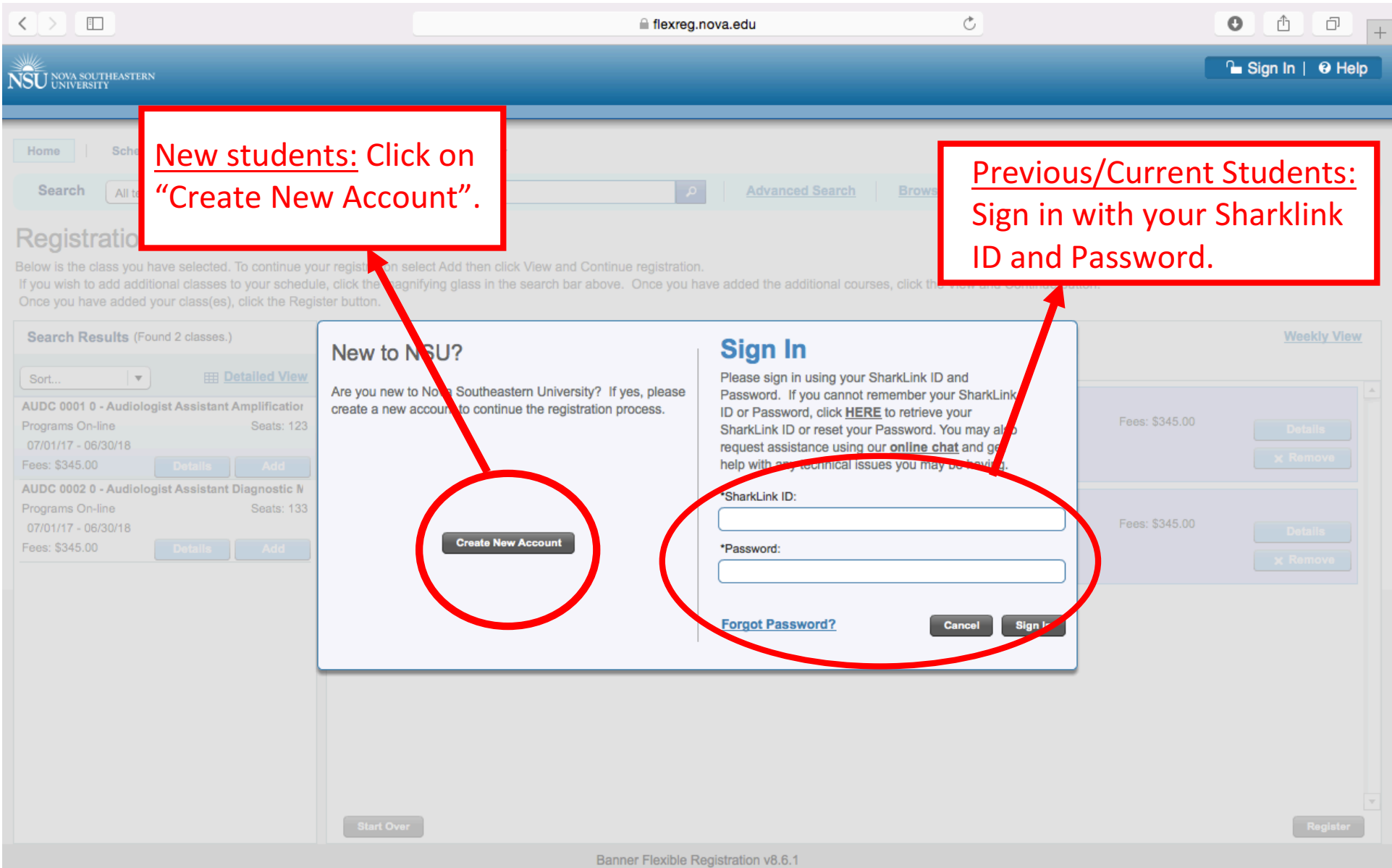
Schedule [Weekly View](#)

Current Registered

AUDC 0001 0 - Audiologist Assistant Amplification Module CRN: 122 Instructor: Andrews, Julia Start dates: 07/01/17 - 06/30/18	Term: 2017-18 ContinuingEd/Prof Dev Type: Distance Educ: Internet	Campus: Programs On-line Seats: 123	Fees: \$345.00 Details Remove
AUDC 0002 0 - Audiologist Assistant Diagnostic Module CRN: 123 Instructor: Andrews, Julia Start dates: 07/01/17 - 06/30/18	Term: 2017-18 ContinuingEd/Prof Dev Type: Distance Educ: Internet	Campus: Programs On-line Seats: 133	Fees: \$345.00 Details Remove

[Start Over](#) [Register](#)

9) Click "Register"



New students: Click on "Create New Account".

Previous/Current Students: Sign in with your Sharklink ID and Password.

New to NSU?

Are you new to Nova Southeastern University? If yes, please create a new account to continue the registration process.

[Create New Account](#)

Sign In

Please sign in using your SharkLink ID and Password. If you cannot remember your SharkLink ID or Password, click [HERE](#) to retrieve your SharkLink ID or reset your Password. You may also request assistance using our [online chat](#) and get help with any technical issues you may be having.

*SharkLink ID:

*Password:

[Forgot Password?](#) [Cancel](#) [Sign In](#)