



SAVE THE DATE !



This activity is tracked by



Winter 2015 CME Meeting 1-30-15

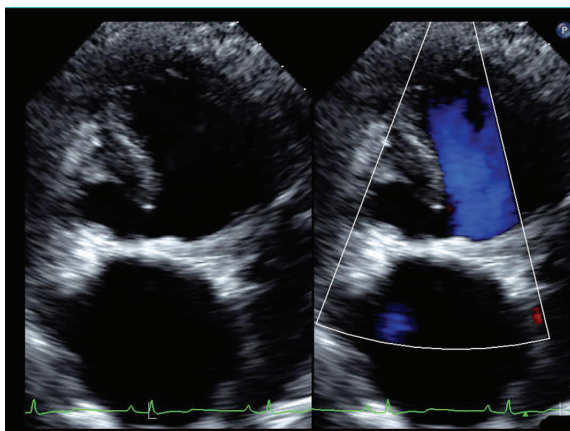
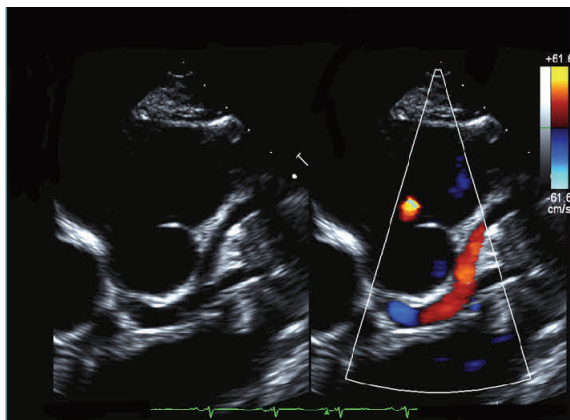
Cardiac Sonography for the Pediatric and Adult Patient with Congenital Heart Defects

Friday January 30, 2015
8:30am - 5:00pm

[A CME opportunity for Cardiac Sonographers.](#)

\$140 - for 7 CME credits * with continental breakfast & lunch included. Attendees are limited to the first 100 reservations: **CALL NOW!** to reserve your seat.

Expert Presentations on Advanced Topics for the Pediatric and Adult Patient with Congenital Heart Defects and the Use of Cardiac Sonography in their Detection, Diagnosis, and Treatment Plan.



Learn about:

- Conotruncal Malformations
- Aberrations of the Coronary Arteries
- Heterotaxy Syndrome & CHD
- Ductus Arteriosus
- Aortic Arch Variations
- Eisenmenger Syndrome
- *AND MORE!*

Seats are Limited to the First 100 Reservations

To R.S.V.P. Please Contact:

Francine Leonard

Phone: (813) 574-5372

E-mail: FL162@nova.edu

Cardiovascular Sonography Program

Nova Southeastern University

3632 Queen Palm Dr., Tampa, FL 33619

Tampa, FL, 33619

* This activity has been approved for seven Continuing Medical Education credits by the Society of Diagnostic Medical Sonography (SDMS) and is eligible for SDMS member CME tracking via the SDMS *CME tracker* SM